

Human Monocyte Nucleofector® Medium

for primary human monocytes

Product information

| | | |
|-----------------------------|--|--|
| Content | VZB-1003 | 500 ml Human Monocyte Nucleofector® Medium |
| | VZB-4003 | 4x500 ml Human Monocyte Nucleofector® Medium |
| Shipping and storage | Human Monocyte Nucleofector Medium is shipped at room temperature and should be stored at 4°C. | |

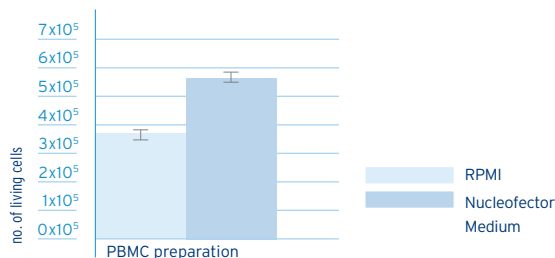
General product use

The Human Monocyte Nucleofector Medium provides the optimal nutritional environment to improve post-transfection survival of nucleofected monocytes. As shown in Figure 1 for a monocyte-enriched cell population, the Human Monocyte Nucleofector Medium elevates the number of viable cells post nucleofection as compared to culture in regular RPMI medium.

Human Monocyte Nucleofector Medium increases number of living monocytes post nucleofection.

Fig.1: Increased number of living monocytes post nucleofection.

Primary human monocytes were nucleofected with pmaxGFP™ and cultured in RPMI 1640 or Human Monocyte Nucleofector Medium. 24 hours post nucleofection absolute numbers of viable monocytes were determined by flow cytometry.



1

General remark

For nucleofection® of human monocytes, please refer to the corresponding Optimized Protocol.

2

Preparation of culture medium

Please add 2 mM glutamine (5 ml of 200 mM stock) and 10% FCS (50 ml) to 500 ml Human Monocyte Nucleofector Medium. Medium supplemented with glutamine and FCS can be stored at 4°C for up to 3 weeks.

3

Isolation of primary human monocytes

For enrichment of monocytes from buffy coats please refer to the Nucleofection protocol for human monocytes, chapter 3.3 (page 4).

4

Use of Human Monocyte Nucleofector Medium for culture of nucleofected human monocytes

Please follow the instructions given in the Optimized Protocol for human monocytes. Incubate the nucleofected cells in pre-equilibrated (at least 30 min at 37°C/5% CO₂) Human Monocyte Nucleofector Medium in 12-well plates for 24 h. After this time, replace the medium by fresh pre-equilibrated Human Monocyte Nucleofector Medium. Continue as indicated in the Optimized Protocol.

5

Use of Human Monocyte Nucleofector Medium for activation of nucleofected human monocytes

Incubate the nucleofected cells in pre-equilibrated Human Monocyte Nucleofector Medium in 12-well plates for 24 h. After this time, replace the medium by fresh pre-equilibrated Human Monocyte Nucleofector Medium containing 1 µg/ml LPS (for activation). Activation can be analyzed (e.g. by TNFα level) 24 h later.

amaxa's Nucleofector® Process, Nucleofector® Device and Nucleofector® Solutions are covered by PCT Applications PCT/EP01/07348, PCT/DE02/01489, PCT/DE02/01483, and other pending patents, and domestic or foreign applications corresponding thereto.

amaxa, Nucleofector, nucleofection and maxGFP are trademarks of amaxa GmbH.

All other products and company names mentioned herein are the trademarks of their respective owner.