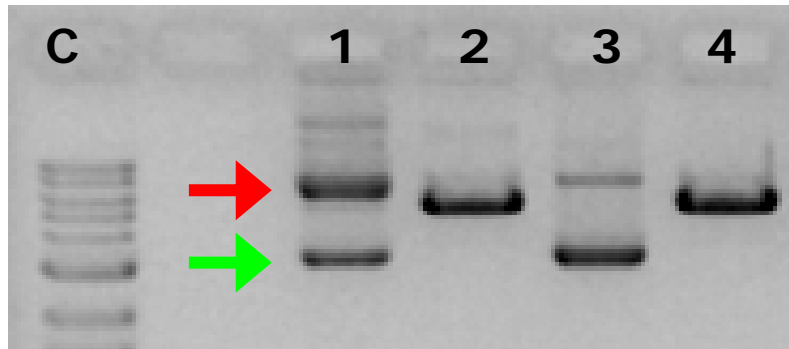


Content of nicked DNA may vary between different plasmid preparations



Lane C: 1kb DNA ladder

Lane 1: luciferase plasmid, preparation A

Lane 2: luciferase plasmid, preparation A, linearized

Lane 3: luciferase plasmid, preparation B

Lane 4: luciferase plasmid, preparation B, linearized

➔ „Nicked DNA“: plasmid DNA with single strand break

➔ Supercoiled plasmid DNA (Content in prep A: 42%, in prep B: 81%)

High content of supercoiled DNA leads to up to 3-fold higher transfection efficiency

Influence of different DNA topology in HeLa

